

Two and three level circuits

- feed-through with 2 levels
- feed-through with 2 levels and internal connection
- available in the standard version (beige) or in a version appropriate for use with "intrinsically safe" (Ex)i circuits (blue)
- universal mounting on mounting rails in accordance with IEC 60715 standard
- terminal block DAS.4 certificate **CESI 03 ATEX 162 U**
Ex e (Ex) I M2 / II 2 G D temperature range of use: -40 – +80°C
- **CoC IEC Ex CES 11.0007 U** Ex e II
- maximum continual operating temperature 100°C

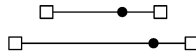
The **/GR** tag indicates the grey version.



- for creating terminal boards in a potentially explosive environment (Ex e) see the indications on page A14

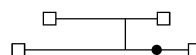
grey version	
beige version	
(Ex)i version	
TECHNICAL CHARACTERISTICS	
function/type	
rated cross-section	(mm ²)
connecting capacity	
flexible	(mm ²)
rigid	(mm ²)
max. flexible with ferrule (mm ²) - ferrule type	
rated voltage / rated current / gauge conf. to IEC 60947-7-1	
rated voltage / rated current / AWG / tightening torque value UL	
(Ex e) rated voltage / / rated current	
rated impulse withstand voltage / pollution degree	
insulation stripping length	(mm)
tightening torque value (test / max)	(Nm)
height / width / thickness	TH/35 7.5 mm
height / width / thickness	TH/35 15 mm
height / width / thickness	G32

DAS.4/GR	Cat. No. DS100GR
DAS.4	Cat. No. DS100
DAS.4 (Ex)i	Cat. No. DS200



2 level feed-through	
4	
0.2 – 6	
0.2 – 6	
4 - WP40/16	
630 V / 30 A / A4	
600 V / 20 A / 20-12 AWG / 8.9 lb.in	
400 / 400 / 28 A	
8 KV / 3	
9	
0.5 / 1.2	
62 / 64 / 6	
70 / 64 / 6	
66 / 64 / 6	

DAS.4/CI/GR	Cat. No. DS117GR
DAS.4/CI	Cat. No. DS117
DAS.4/CI (Ex)i	Cat. No. DS217



feed-through with internal jumper mounted	
4	
0.2 – 6	
0.2 – 6	
4 - WP40/16	
630 V / 30 A / A4	
600 V / 20 A / 20-12 AWG / 8.9 lb.in	
-	
8 KV / 3	
9	
0.5 / 1.2	
62 / 64 / 6	
70 / 64 / 6	
66 / 64 / 6	

APPROVALS



ACCESSORIES

Grey	beige
	end section
	blue
Permanent cross connection	
Rated current carrying capacity of jumper	(A)
Cross-connection identification strip(100 mm)	green
Switchable cross connection	
Multiple common bar	250 mm
Shunting screw and sleeve (same, Ex e version)	
Coloured partition	red, green, white
Cross connection barrier	red
Test plug socket	
Test plug	
Modular test plug	
End section for modular test plug	
Numbering strip	
Shunting screw and sleeve	internal jumper
	internal jumper + external jumper
Cover for cross-connection	
Marking tag	printed or blank
End bracket	

Type	Cat. No.
DAS/PT/GR	DS101GR
DAS/PT	DS101
DAS/PT (Ex)i	DS201
PM/41/2 poles	PM412
PM/51/3 poles	PM513
PM/51/5 poles	PM515
PM/51/10 poles	PM510
30	
POS/43	POS43
PMP/58	PMP58
CPM/01 (CPX/01)	CPM01 (CPX01)
DFU/7	DU07..
PSD/A	PD001
SDD/1	DD001
CNU/8/61	NU0861
DAS/VCI	DS107
DAS/VCE	DS108
PRP/5	PRP05
CNU/8/61	NU0861
BTU for PR/DIN and PR/3	BT005
BT/DIN/PO for PR/DIN only	BT001
BT/3-BTO for PR/3 only	BT003-BT007

Type	Cat. No.
DAS/PT/GR	DS101GR
DAS/PT	DS101
DAS/PT (Ex)i	DS201
PM/41/2 poles	PM412
PM/51/3 poles	PM513
PM/51/5 poles	PM515
PM/51/10 poles	PM510
30	
POS/43	POS43
PMP/58	PMP58
CPM/01 (CPX/01)	CPM01 (CPX01)
DFU/7	DU07..
PSD/A	PD001
SDD/1	DD001
CNU/8/61	NU0861
DAS/VCE	DS108
PRP/5	PRP05
CNU/8/61	NU0861
BTU for PR/DIN and PR/3	BT005
BT/DIN/PO for PR/DIN only	BT001
BT/3-BTO for PR/3 only	BT003-BT007