

D600

Performance Level Thermal Camera



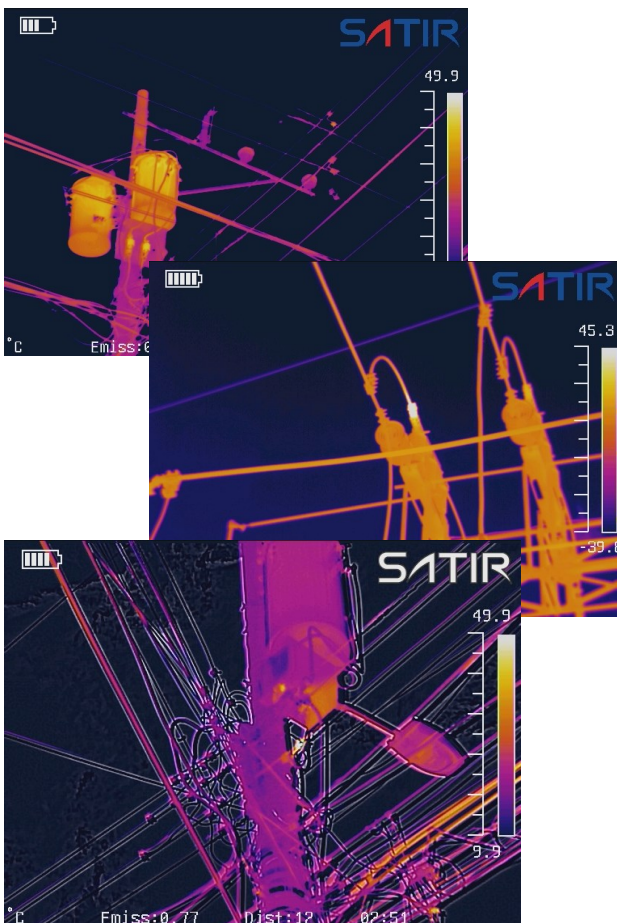
SATIR D600 is our newest addition to the D-Series, it is a high performance handheld IR camera which delivers high quality Images and thermal videos with it's 640x480 IR detector.

The D600 has a range of imaging modes which includes Duo-Vision Plus which is SATIR latest innovative imaging technology. Duo Vision merges a infrared and visual image to deliver a highly detailed image to the user for analysis when carrying out a thermal survey.

The D600 comes with a touch screen that will auto focus to ensure the user has a clearly focused thermal image. This means when generating a report the image is already focused which enables accurate evaluation.

Key Features

- Digital Zoom
- IR/Digital/Duo-Vision/Duo Vision Plus
- Laser Pointer
- 8 Hours Battery Life
- Adaptable LCD Display
- Easy to use interface
- 5 MP High Definition Camera
- Thermal Video Recording



D600 Specifications

Image Performance	
Detector Resolution	640x480
Thermal Sensitivity (N.E.T.D)	≤0.03°C@30°C
FOV/Min. Focus Distance	24°x18°/0.25m
Spectral Range	7.5-14µm
Spatial Resolution	0.65 mrad
Focus Mechanism	Motorised/Auto/Manual
Measurement	
Temperature Range	-20°C ~ + 600°C, up to +1000°C or +1500°C (Optional)
Accuracy	±2°C or ± 2% of readings
Measurement Mode	8 Movable Spots, Auto Hot/Cold Spot,profile, 5 area boxes, isotherm, line
Alarm	Yes
Image Presentation	
Image Mode	IR/Digital/Duo-Vision/Duo Vision Plus
Visible Pixels	HD 5MP Digital Camera
Colour Palettes	8 Colour Palettes
LCD Display	3.5" Capacitive Touch Screen
Image Output Mode	NTSC (60Hz) or PAL (50Hz) Composite Video
File Format (Thermal/Visual)	JPEG (Thermal/Visual)
Power System	
Battery Type	Built-in Rechargeable Lithium-ion Battery
Charge Interface	Type-C
Power Manage	Auto Shut Off/Sleep Mode
Environmental	
Encapsulation	IP54
Physical Characteristics	
Weight	0.85KG
Dimensions	232mm×115mm×168mm
Extras	
Wi-Fi	Yes

Please be aware specifications can vary from time to time