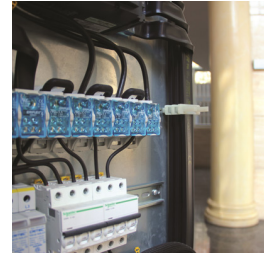
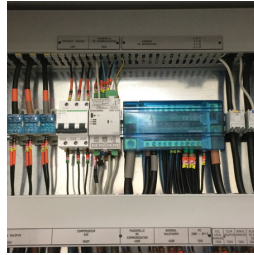
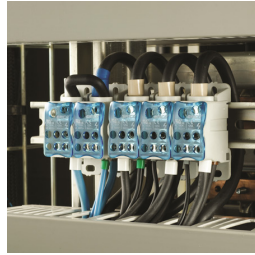


Single Pole Distribution Block



- Tinned copper or aluminum block allows for copper or aluminum conductor direct connections, or using ferrule
- Screw retaining cover is hinged and removable
- Design allows for visual inspection of conductor and confirmation of connection
- Modular snap-together blocks for building multi-pole power blocks
- Easily clips onto DIN rail or mounts to panel with screws
- 95% fill ratio
- RoHS compliant
- Conforms to EN 45545 obtaining an HL3 classification for chapter R23 and HL2 classification for chapter R22
- Halogen free



Finish: Tinned

Part Number	Article Number	Max Current Rating, IEC	Max Current Rating, UL/CSA	Line Side Connection	Load Side Connection	Material	Line Side Max Conductor Size, IEC	Load Side Max Conductor Size, IEC	Max Working Voltage, IEC (Ui)	Max Working Voltage, UL (Vin)	Certifications
UD-80A	569010	80 A	85 A	Cable	6 Cables	Copper, Thermoplastic	16 mm ²	16 mm ²	1,000 VAC/DC	600 V	CE, ERIFLEX UD, CSA, cURus, EAC, EN 45545, RoHS
UDJ-125A	569020	125 A	150 A	Cable	7 Cables	Copper, Thermoplastic	35 mm ²	16 mm ²	1,000 VAC/DC	600 V	CE, ERIFLEX UD, CSA, cURus, EAC, EN 45545, RoHS
UDJ-160A	569030	160 A	200 A	Cable	7 Cables	Copper, Thermoplastic	70 mm ²	16 mm ²	1,000 VAC/DC	600 V	CE, ERIFLEX UD, CSA, cURus, EAC, EN 45545, RoHS
UD-250A	569040	250 A	255 A	Cable	11 Cables	Copper, Thermoplastic	120 mm ²	35 mm ²	1,000 VAC/DC	600 V	CE, ERIFLEX UD, CSA, cURus, EAC, EN 45545, RoHS
UDF-250A	569041	250 A	255 A	Flat Conductor	6 Cables	Copper, Thermoplastic	70 mm ²	16 mm ²	1,000 VAC/DC	600 V	CE, ERIFLEX UD, cURus, EAC, EN 45545, RoHS
UD-400A	569050	400 A	335 A	Cable	11 Cables	Copper, Thermoplastic	185 mm ²	35 mm ²	1,000 VAC/DC	600 V	CE, ERIFLEX UD, CSA, cURus, EAC, EN 45545, RoHS
UD-400112AL	569252	400 A	335 A	Cable	12 Cables	Aluminum, Thermoplastic	185 mm ²	10 mm ²	1,000 VAC, 1,500 VDC	1,000 VAC/DC	CE, ERIFLEX UD, CSA, cURus, EAC,

Part Number	Article Number	Max Current Rating, IEC	Max Current Rating, UL/CSA	Line Side Connection	Load Side Connection	Material	Line Side Max Conductor Size, IEC	Load Side Max Conductor Size, IEC	Max Working Voltage, IEC (Ui)	Max Working Voltage, UL (Vin)	Certifications
											EN 45545, RoHS
UD-400112CU	569052	400 A	335 A	Cable	12 Cables	Copper, Thermoplastic	185 mm ²	10 mm ²	1,000 VAC, 1,500 VDC	1,000 VAC/DC	CE, ERIFLEX UD, CSA, cURus, EAC, EN 45545, RoHS
UD-400212AL	569251	400 A	400 A	2 Cables	12 Cables	Aluminum, Thermoplastic	95 mm ²	10 mm ²	1,000 VAC, 1,500 VDC	1,000 VAC/DC	CE, ERIFLEX UD, CSA, cURus, EAC, EN 45545, RoHS
UD-400212CU	569051	400 A	400 A	2 Cables	12 Cables	Copper, Thermoplastic	95 mm ²	10 mm ²	1,000 VAC, 1,500 VDC	1,000 VAC/DC	CE, ERIFLEX UD, CSA, cURus, EAC, EN 45545, RoHS
UDF-500A	569060	500 A	335 A	Flat Conductor	11 Cables	Copper, Thermoplastic	185 mm ²	35 mm ²	1,000 VAC/DC	600 V	CE, ERIFLEX UD, cURus, EAC, EN 45545, RoHS
UD6C500AL	569201	500 A	380 A	Cable	6 Cables	Aluminum, Thermoplastic	240 mm ²	240 mm ²	1,000 VAC, 1,500 VDC	1,000 VAC/DC	EN 45545, UL
UDF6C500AL	569202	500 A	475 A	Flat Conductor	6 Cables	Aluminum, Thermoplastic	100 mm ²	50 mm ²	1,000 VAC, 1,500 VDC	1,000 VAC/DC	EN 45545, UL
UDF9C500AL	569204	500 A	490 A	Flat Conductor	9 Cables	Aluminum, Thermoplastic	100 mm ²	25 mm ²	1,000 VAC, 1,500 VDC	1,000 VAC/DC	EN 45545, UL
UDF12C500AL	569206	500 A	500 A	Flat Conductor	12 Cables	Aluminum, Thermoplastic	100 mm ²	25 mm ²	1,000 VAC, 1,500 VDC	1,000 VAC/DC	EN 45545, UL
UD9C630AL	569203	630 A	420 A	Cable	9 Cables	Aluminum, Thermoplastic	300 mm ²	25 mm ²	1,000 VAC, 1,500 VDC	1,000 VAC/DC	EN 45545, UL
UD2C12C630AL	569205	630 A	670 A	2 Cables	12 Cables	Aluminum, Thermoplastic	185 mm ²	25 mm ²	1,000 VAC, 1,500 VDC	1,000 VAC/DC	EN 45545, UL
UDF12C800AL	569208	800 A	670 A	Flat Conductor	12 Cables	Aluminum, Thermoplastic	240 mm ²	25 mm ²	1,000 VAC, 1,500 VDC	1,000 VAC/DC	EN 45545, UL
UD2C12C1000AL	569207	1,000 A	760 A	2 Cables	12 Cables	Aluminum, Thermoplastic	240 mm ²	25 mm ²	1,000 VAC, 1,500 VDC	1,000 VAC/DC	EN 45545, UL
UDF9C1000AL	569210	1,000 A	840 A	Flat Conductor	9 Cables	Aluminum, Thermoplastic	240 mm ²	95 mm ²	1,000 VAC, 1,500 VDC	1,000 VAC/DC	EN 45545, UL
UD2C9C1250AL	569209	1,250 A	950 A	2 Cables	9 Cables	Aluminum, Thermoplastic	400 mm ²	95 mm ²	1,000 VAC, 1,500 VDC	1,000 VAC/DC	EN 45545, UL

Design Guideline for Distribution Blocks, Power Blocks and Power Terminals										
Derating according to Ambient* Temperature [°C] to maintain working temperature of 85°C										
Ambient Temperature [°C]	30°	35°	40°	45°	50°	55°	60°	65°	70°	75°
Derating Coefficient [d]	1	1	1	0.94	0.88	0.82	0.75	0.67	0.58	0.47
*environment around the terminal blocks inside the enclosure										

Increase the number of outputs with one input using a jumper on blocks with a Max Current Rating, IEC up to 160 A.
Blocks with 1,000 VAC/DC Max Working Voltage, UL are ideal for solar applications.

CSA, CSA-US and C-CSA-US are registered trademarks of Canadian Standards Association. UL, UR, cUL, cUR, cULus and cURus are registered certification marks of UL LLC.

WARNING

nVent products shall be installed and used only as indicated in nVent's product instruction sheets and training materials. Instruction sheets are available at www.erico.com and from your nVent customer service representative. Improper installation, misuse, misapplication or other failure to completely follow nVent's instructions and warnings may cause product malfunction, property damage, serious bodily injury and death and/or void your warranty.

© 2021 nVent All rights reserved

nVent, nVent CADDY, nVent ERICO, nVent ERIFLEX and nVent LENTON are owned by nVent or its global affiliates.

All other trademarks are the property of their respective owners. nVent reserves the right to change specifications without prior notice.